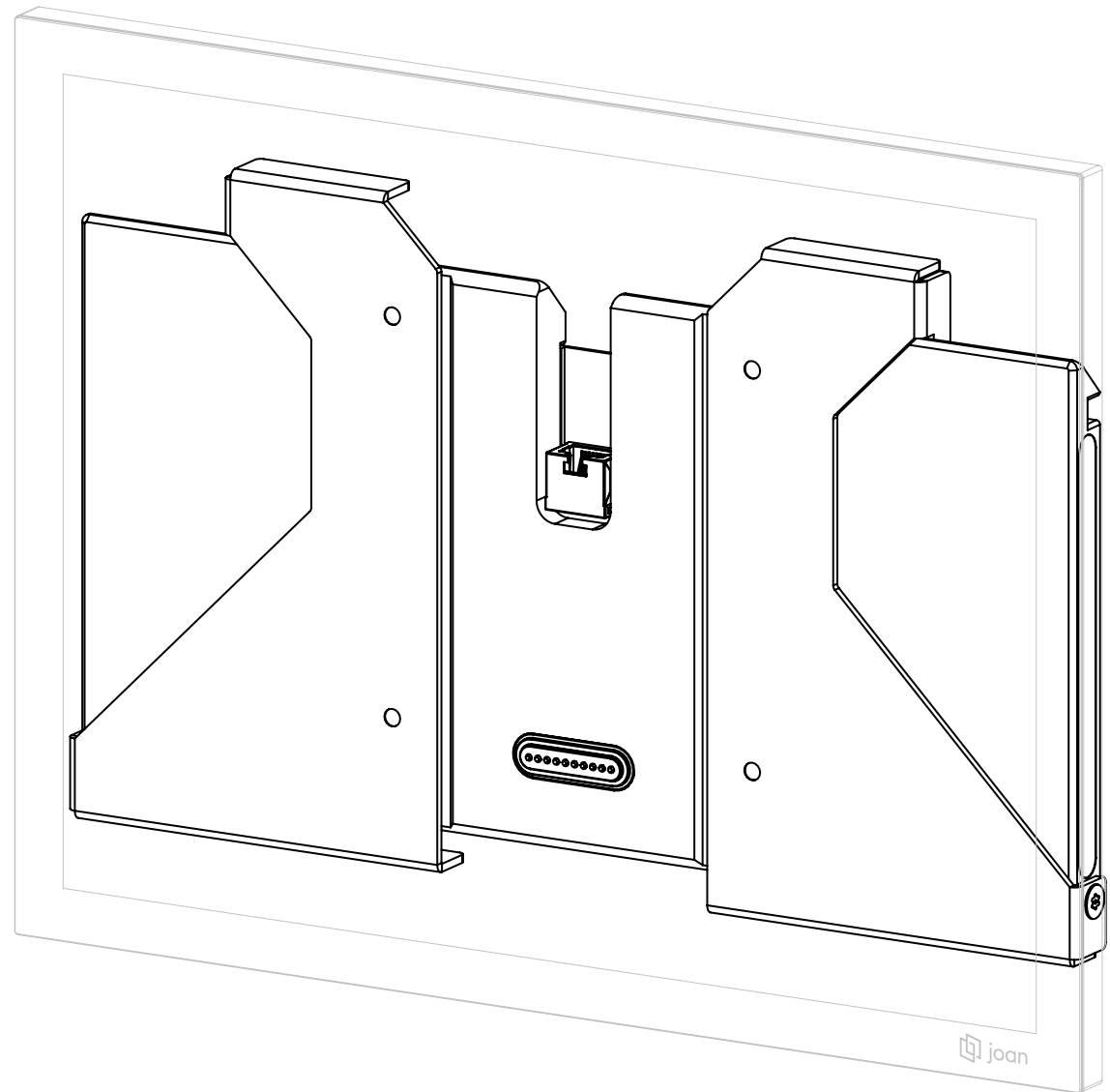


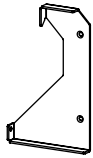


JOAN 13 PRO

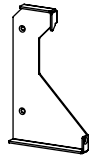
# PoE Secure Wall Mount



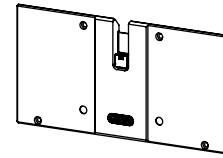
Guaranteed safety, security, and seamless connectivity for Joan 13 Pro.



**1x**  
Bracket  
(left)



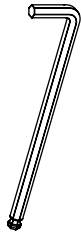
**1x**  
Bracket  
(right)



**1x**  
Joan 13 Pro PoE  
Secure Wall Mount



**4x**  
4.2x40 Self-tapping screws  
for wall mounting



**1x**  
Hex key



**1x**  
Security torx key



**4x**  
Wall plug



**4x**  
Drywall plug



**4x**  
M4x8 Bracket  
mounting screws



**3x**  
M4x8 Security screws  
(1 spare)

## Compatibility

This PoE Secure Wall Mount is specifically designed to be compatible exclusively with Joan 13 Pro devices, and does not support older non-Pro Joan 13 devices.

## Step 1

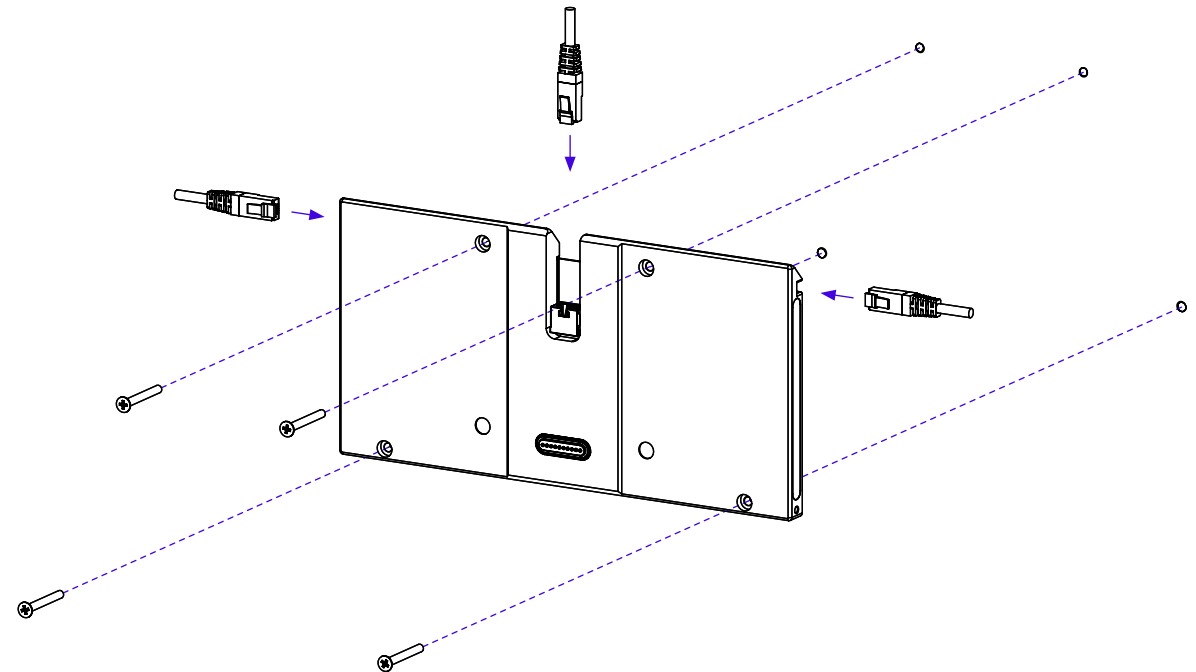
Drill holes into the wall and connect your PoE cable from either of the three indicated directions before mounting the PoE Secure Wall Mount to the wall.

### CAUTION

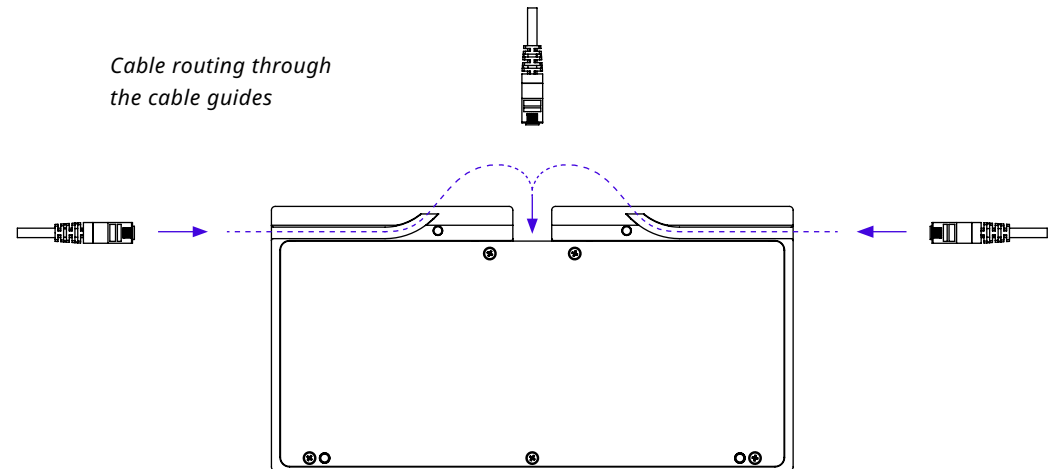
If connecting your PoE cable from the left or right side, route the cable through the cable guides shown on the image below.

Attach the Joan 13 Pro PoE Secure Wall Mount to the wall using the included screws.

It can be mounted at a maximum height of 2 meters.

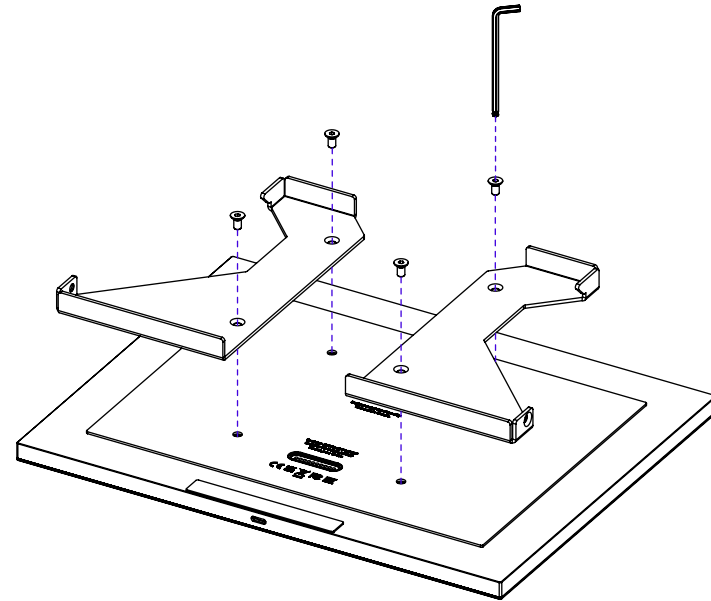


*Cable routing through  
the cable guides*



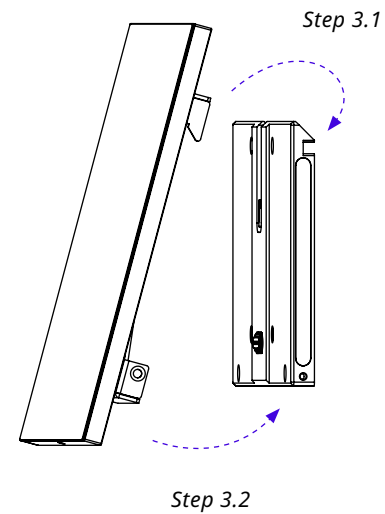
## Step 2

Attach the included brackets to your Joan 13 Pro as shown, using 4 × M4x8 hex screws.



## Step 3

- 3.1 Hang your Joan 13 Pro top-side first onto the PoE Secure Wall Mount.
- 3.2 Next push the bottom side of your Joan 13 Pro towards the PoE Secure Wall Mount.



## Step 4

Secure your Joan 13 Pro to the PoE Secure Wall Mount using the included 2 × M4x8 security torx screws and key.

An extra screw is included as a spare.

